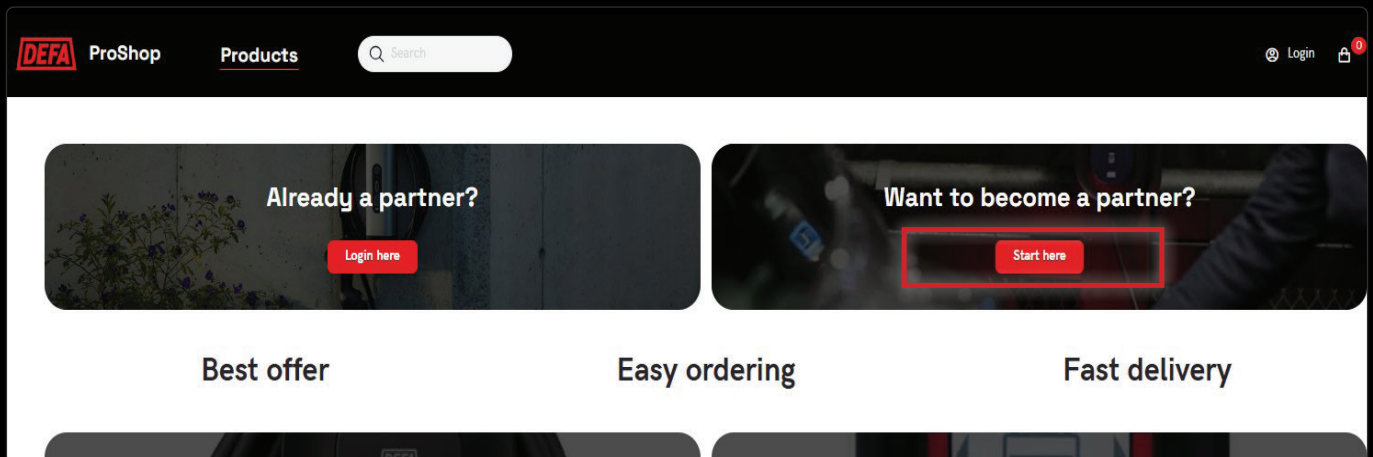


DEFA ProShop - How to get webshop access



You can easily sign up for access to DEFA ProShop:

If you already have an agreement with DEFA:

Send an email to webshop@defa.com including the company name and address, your DEFA account number, the name and email address of the person that will administer the account log-in. We will then get back to you.

If you do not have an account with DEFA:

Visit the ProShop; <https://proshop.defa.com> and click on the banner; 'Want to become a partner'

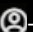
- Fill in the form with company details, and your name and contact information.
- We appreciate if you add a few details about which products you are interested in.
- A sales representative from DEFA will contact you to set an agreement with your company.
- When the agreement is ready, your details will be uploaded in the ProShop and you can set up your account.

Set up your account:

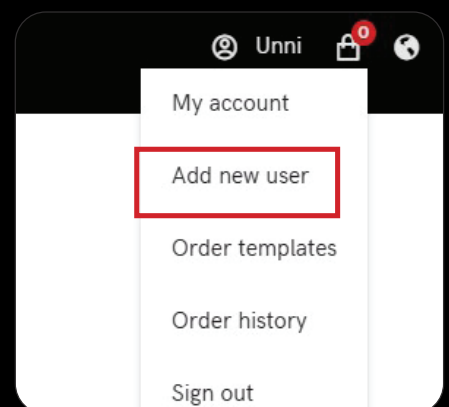
Your account details have been imported, so all you need to do is to create a new password.

Use the ProShop link <https://proshop.defa.com/> - click "Login" on **Already a partner** (see above).

- Under "Is this your first time logging in?", click the red button.
- Enter your name and email address.
- You will receive a verification code by email.
- Enter the verification code.
- Create a **new** password and complete your sign-up.

You can also easily invite your colleagues into the ProShop from the -icon in the Header.

If you have access to more than one account at DEFA, you need to contact us at webshop@defa.com to set up your account and invite your colleagues.



Any questions?

Contact your DEFA sales manager or email: proshop@defa.com.

