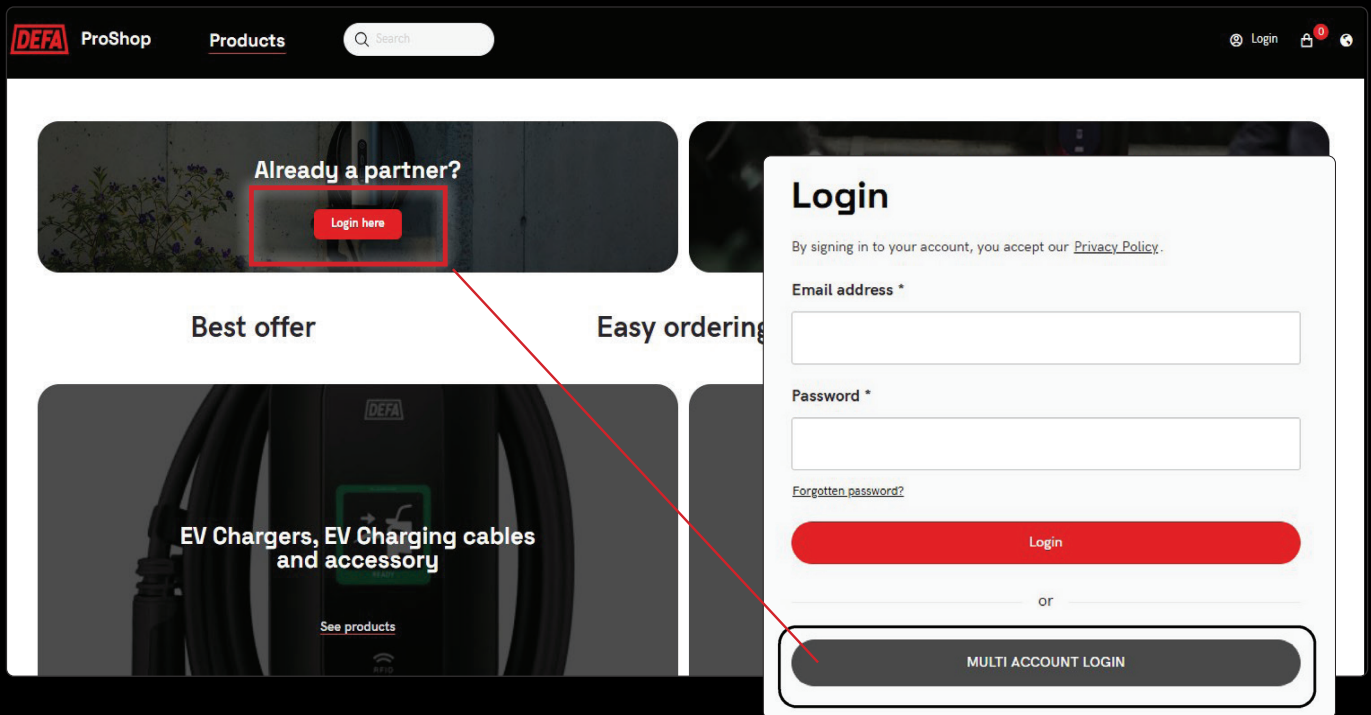


# DEFA ProShop - Get started!

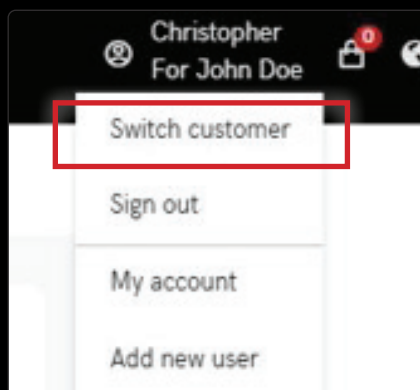


## If you can order on more accounts than one, this is how you get started:

Your account details have been imported, so you only need to log in. Use the ProShop link <https://proshop.defa.com/> - click 'Login here' on **Already a partner** (see above).

- On the Login page, you click on the grey button; 'Multi Account login'.
- Sign in using your personal company credentials (*the same username and password you use for your daily work systems, such as Outlook, Teams, or your computer login*).
- You will receive a verification code (check spam) to your email that you need to enter. **Then you are signed up.**
- Next time you log in, you also use the 'Multi Account Login'.

You can easily switch between customers and enter your orders in the ProShop:



If you want to add more users to your account, send an email to: [webshop@defa.com](mailto:webshop@defa.com)

## Any questions?

Contact your DEFA sales manager or email: [proshop@defa.com](mailto:proshop@defa.com).

