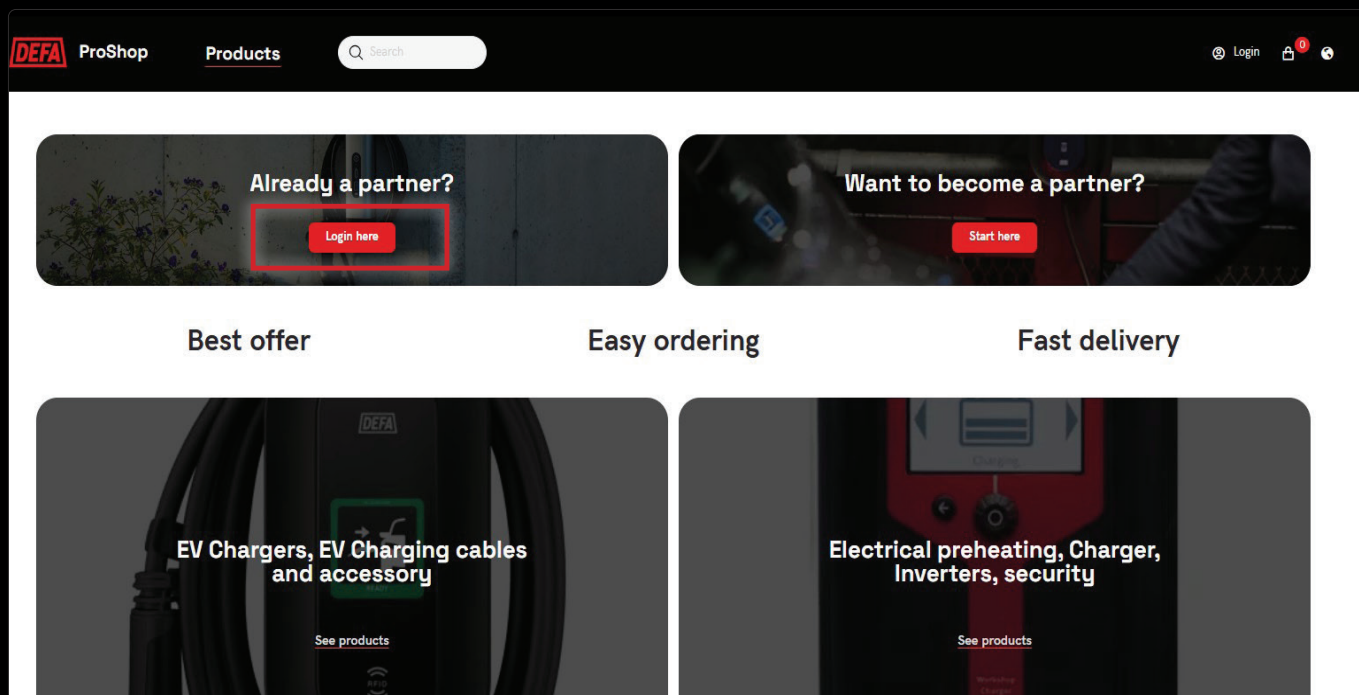


# DEFA ProShop - Get started!



## Set up your account:

Your account details have been imported, so all you need to do is to create a new password. Use the ProShop link <https://proshop.defa.com/> - click "Login" on **Already a partner** (see above).

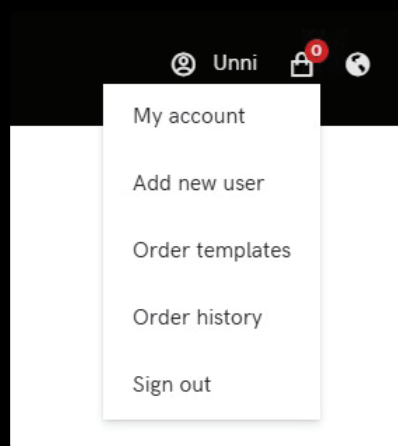
- Under "Is this your first time logging in?", click the red button.
- Enter your name and email address.
- You will receive a verification code by email.
- Enter the verification code.
- Create a **new** password and complete your sign-up.

## Log in to your account

Click 'Log in' and enter your details:

## Add new users to your account

Click 'My account' in header, and Add new user:



**Tell the colleague you have added to make a new password (as described above) to get access to the ProShop**

## Any questions?

Contact your DEFA sales manager or email: [proshop@defa.com](mailto:proshop@defa.com).

