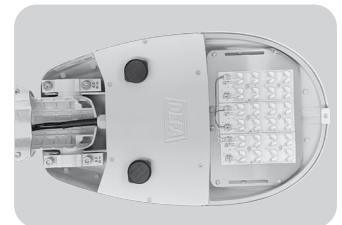
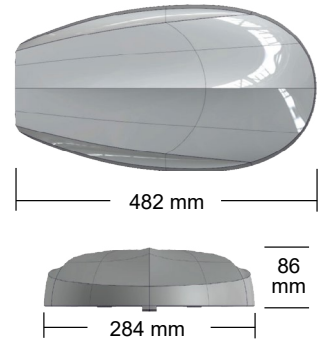


Elite small - Zhaga



Elite small - 25% more efficient - several new versions



Description

Body in pressure die-cast aluminium with impact 5 mm flat glass. Powder painted in grey - RAL 7035, corrosion class C5. Elite is design to give maximum heat transmission and long lifetime, with a plain surface without any visible cooling ribs. CLO - Constant Light Output as standard. The fitting gratify EN 62471 requirement for photo biological safety. 6kV Surge Protection Device and Zhaga connector is integrated.

Application areas

The plain design of the fitting makes Elite suitable in various application areas. By use of the wall fixing Elite is ideal for use as wall light around buildings and plants. Due to the street light optics the fitting is ideal for use along minor roads, tracks, foot and cycle paths and parking areas.

Mounting

The fixing bracket in die-cast aluminium, is reversible for mounting on arm or pole top Ø40-76mm, can be tilted in steps of 5°. The fitting is supplied with 2x1,5mm² cable, 8m length as standard.

On request

- 10kV Surge Protection Device
- Alternative effects and luminous flux
- Other cable lengths
- Adapted for all open light control systems
- Night reduction with other levels/time settings or without NR
- Photo-cell kit
- See separate product sheet for asymmetrical floodlight version

Light source

Colour index: RA >70
 Colour tolerance: MacAdams 3
 Lifetime: 100 000h L90B10
 Weight: 6 kg
 Vind surface: 0,032 m²

System efficiency up till 161 lm/W.

DEFA nr.	Type					Control
125976	Elite small	16LED 4200lm	28W	730	NR	2x Zhaga
124800	Elite small	16LED 4400lm	28W	740	NR	2x Zhaga
125971	Elite small	24LED 6200lm	41W	730	NR	2x Zhaga
122800	Elite small	24LED 6600lm	41W	740	NR	2x Zhaga
125968	Elite small	32LED 8600lm	56W	730	NR	2x Zhaga
122900	Elite small	32LED 9000lm	56W	740	NR	2x Zhaga

NR = Automatic Night Reduction 50%, ~ hr 23-05

Accessories:

128901 10kV Surge Protection Device with LED indicator



10kV Surge Protection Device with LED indicator