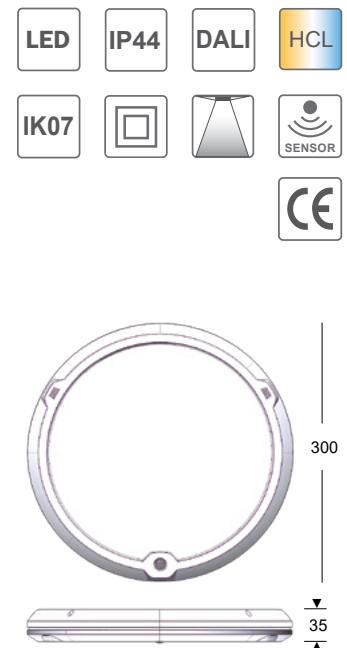
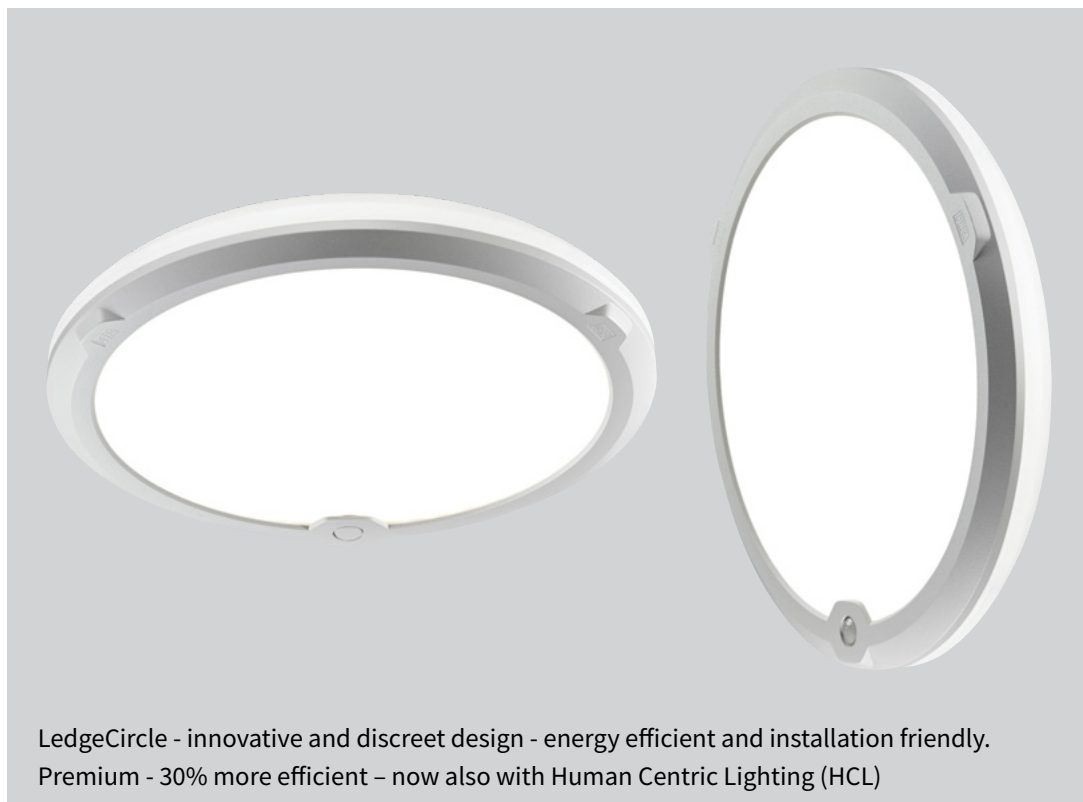


LedgeCircle® D300 - Premium



LedgeCircle - innovative and discreet design - energy efficient and installation friendly.
Premium - 30% more efficient – now also with Human Centric Lighting (HCL)

Description

Modern wall and ceiling fitting based upon newly developed edge-lit technology, which in spite of the very small sizes contains a variety of alternative control systems. High quality, IP-class and top rated light distribution in combination with a discreet design makes the fitting ideal both in official and private premises. LedgeCircle is available in 2 sizes, both in several versions, which makes the fittings suitable in various application areas.

Application area

All-purpose fitting for entrance, stair, corridor, reception area, lounge, waiting room, toilet, bathroom etc.

Materials

Powder painted aluminium front in white, RAL 9016. Driver, diffuser and luminous back part in UV-stabilized impact resistant polycarbonate.

Mounting

Direct in ceiling or on wall. Keyholes which fits a standard ceiling box placed in 45° angles (fitting adjustable +/-5°). For surface mounted cable enclosed distances are used.

Installation

2 pcs rubber bushings in centre the fitting makes easy in and out cabling possible. Power connection through 2-pole terminal block up to 2,5 mm² cable. Through wiring possible.

LightAdjust

Fittings marked with "LightAdjust" are equipped with a setting making it possible to set the preferred light level in steps.

PIR MinMaxOff

Infrared motion sensor which alternate between max light 100% when presence and min 10% after preset time, 10-min, without detection. After additional delay the light turns off (eligible). All settings are made via DIP-switches on the fitting or via remote control (accessories). This version is ideal for use in smaller rooms such as entrances and toilets.

Radar MinMaxOff

Infrared motion sensor which alternate between max light 100% when presence and min 10% after preset time, 10-min, without detection. After additional delay the light turns off (eligible). All settings are made via DIP-switches on the fitting. This sensor is suitable when longer range and high sensitivity are requested, ideal for use in larger areas such as staircases and corridors.

RF Radar MinMaxOff

LedgeCircle® RF is a Radar MinMaxOff fitting with a built-in radio device that enables communication between fittings. The combination of motion detection, communication and lighting controls makes LedgeCircle® RF ideal for applications like stairways and corridors where you want the light to be off or at a reduced level when no one is present, while providing ideal lighting whenever it's needed. Setting of the RF version requires a remote control. For more information please see separate RF manual on www.defa.com.

HCL - Human Centric Lighting (Tunable White)

HCL versions are offering solutions that can produce light of different colours, colour temperatures and intensity to provide ideal visual working conditions in challenging environments and/or stimulate the human circadian rhythm. HCL lighting technology produce light of different colours to create ideal visual working conditions to enhance human performance and wellbeing. The HCL versions are adapted for all recognized control systems.

Fittings (pcs) each circuit

		10-B	10-C	16-B	16-C
9,4W	OnOff	29	47	46	78
9,4W	DALI	24	40	38	64
10,1W	MinMaxOff	34	56	54	91
10W	HCL	10	22	22	37

LED unit

Colour index:	RA>80	Colour tolerance:	MacAdam <3
Lifetime OnOff:	L80B10 100.000 h	Lifetime driver:	62.000 h
Lifetime DALI:	L80B50 100.000 h	Lifetime driver:	100.000 h

LedgeCircle® D300 - Premium



Number	Type	Light source	lm. fitting	lm/W	Control	Weight
125160	LedgeCircle	D300 PR 4.6-12,3W 3000K	501-1595	127*	OnOff	LightAdjust 1.1 1,4 kg
125161	LedgeCircle	D300 PR 9,4W 3000K	1193	127	DALI	1,4 kg
125163	LedgeCircle PIR	D300 PR 10,1-23,5W 3000K	1250-3022	124*	PIR MinMaxOff	LightAdjust 2.1 1,5 kg
125164	LedgeCircle Radar	D300 PR 10,1-23,5W 3000K	1250-3022	124*	Radar MinMaxOff	LightAdjust 2.1 1,5 kg
125165	LedgeCircle RF	D300 PR 10,1-23,5W 3000K	1250-3022	124*	RF Radar MinMaxOff**	LightAdjust 2.1 1,5 kg
125166	LedgeCircle	D300 PR 4.5-12,3W 4000K	507-1649	131*	OnOff	LightAdjust 1.2 1,4 kg
125167	LedgeCircle	D300 PR 9,4W 4000K	1236	131	DALI	1,4 kg
125169	LedgeCircle PIR	D300 PR 10,1-23,5W 4000K	1297-3141	128*	PIR MinMaxOff	LightAdjust 2.2 1,5 kg
125170	LedgeCircle Radar	D300 PR 10,1-23,5W 4000K	1297-3141	128*	Radar MinMaxOff	LightAdjust 2.2 1,5 kg
125171	LedgeCircle RF	D300 PR 10,1-23,5W 4000K	1297-3141	128*	RF Radar MinMaxOff**	LightAdjust 2.2 1,5 kg
123460	LedgeCircle HCL	D300 PR 10W 2700-6500K	1236	124	DALI 8	1,4 kg

* Factory setting

**For setting of the RF version the 122608 remote control is required

Accessories:

120420	Remote control HRC-05	For PIR MinMaxOff
122608	Remote control RF HRC-11	For RF Radar MinMaxOff
123416	Shelter brackets	D300 kit (pair)

LightAdjust 1.1

W	lumen out	1	2	3
4,6	501	○	○	○
5,7	665	○	○	●
6,7	817	○	●	○
7,8	977	○	●	●
* 9,4	1193	●	○	○
10,4	1340	●	○	●
11,3	1469	●	●	○
12,3	1595	●	●	●

* Factory setting

LightAdjust 1.2

W	lumen out	1	2	3
4,5	507	○	○	○
5,7	678	○	○	●
6,7	836	○	●	○
7,8	1004	○	●	●
* 9,4	1236	●	○	○
10,4	1380	●	○	●
11,4	1511	●	●	○
12,3	1649	●	●	●

* Factory setting

LightAdjust 2.1

W	lumen out	1	2	3
*10,1	1250	○	○	○
13,6	1730	●	○	○
14,7	1891	○	●	○
18,3	2361	●	●	○
19,9	2567	○	●	●
23,5	3022	●	●	●

* Factory setting

LightAdjust 2.2

W	lumen out	1	2	3
*10,1	1297	○	○	○
13,6	1791	●	○	○
14,7	1959	○	●	○
18,3	2450	●	●	○
19,9	2665	○	●	●
23,5	3141	●	●	●

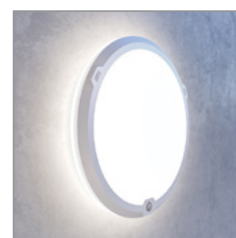
* Factory setting

LightAdjust - adjustable light

Fittings marked with "LightAdjust" are equipped with a setting which makes it possible to set the preferred light level in steps. By delivery the fittings are set on 9,4W or 10,1W.



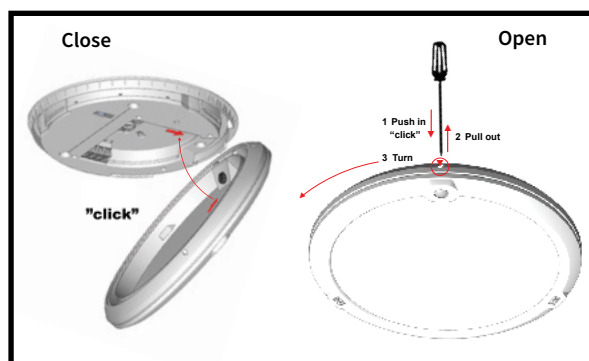
Shelter brackets



LedgeCircle is supplied with back/side light



LedgeCircle with PIR sensor



Easy mounting and dismounting

The mounting plate and the fitting clicks together and the fitting is installed. Dismounting by an easy click and turn mechanism to open the fitting.

