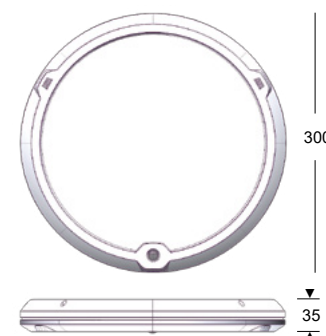
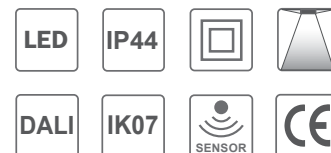
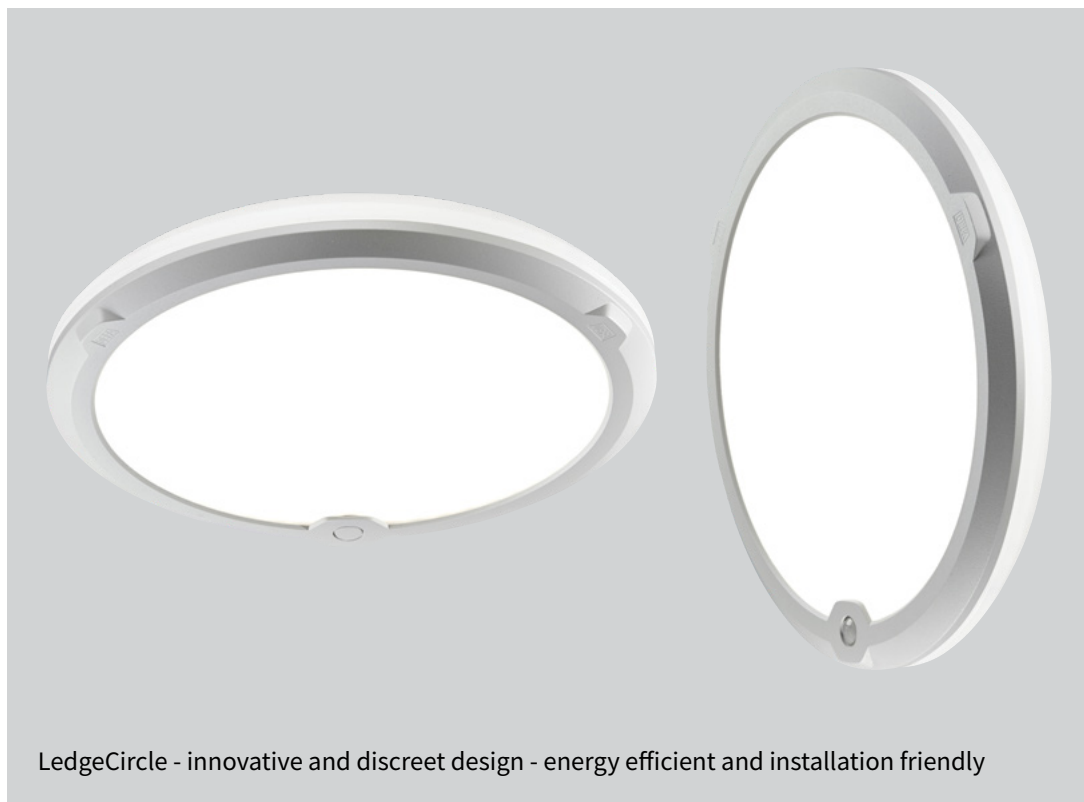


LedgeCircle® D300



LedgeCircle - innovative and discreet design - energy efficient and installation friendly

Description

Modern wall and ceiling fitting based upon newly developed edge-lit technology, which in spite of the very small sizes contains a variety of alternative control systems. High quality, IP-class and top rated light distribution in combination with a discreet design makes the fitting ideal both in official and private premises. LedgeCircle is available in 2 sizes, both in several versions, which makes the fittings suitable in various application areas.

Application area

All-purpose fitting for entrance, stair, corridor, reception area, lounge, waiting room, toilet, bathroom etc.

Materials

Powder painted aluminium front in white, RAL 9016. Driver, diffuser and luminescent backpart in UV-stabilized impact resistant polycarbonate.

Mounting

Direct in ceiling or on wall. Keyholes which fits a standard ceiling box placed in 45° angles (fitting adjustable +/-5°). For surface mounted cable enclosed distances are used.

Installation

2 pcs rubber bushings in centre the fitting makes easy in and out cabling possible. Power connection through 2-pole terminal block up to 2,5 mm² cable. Through wiring possible.

PIR OnOff

Infrared motion sensor which turns on and off after movement. The hold time can be set in steps from 8-sec to 25-min, preset on 10-min. Slave output (100W). This version is ideal for use in smaller rooms such as entrances and toilets.

PIR MinMaxOff

Infrared motion sensor which alternate between max light 100% when presence and min 10% after preset time, 10-min, without detection. After additional delay the light turns off (eligible). All settings are made via DIP-switches on the fitting or via remote control (accessories). This version is ideal for use in smaller rooms such as entrances and toilets.

Radar MinMaxOff

Infrared motion sensor which alternate between max light 100% when presence and min 10% after preset time, 10-min, without detection. After additional delay the light turns off (eligible). All settings are made via DIP-switches on the fitting. This sensor is suitable when longer range and high sensitivity are requested. This version is ideal for use in larger areas such as staircases and corridors.

RF Radar MinMaxOff

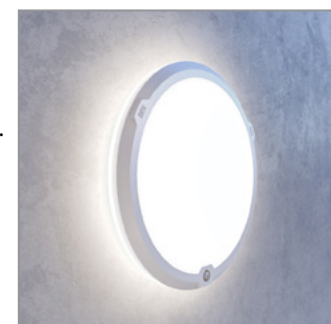
LedgeCircle® RF is a Radar MinMaxOff fitting with a built-in radio device that enables communication between fittings. The combination of motion detection, communication and lighting controls makes LedgeCircle® RF ideal for applications like stairways and corridors where you want the light to be off or at a reduced level when no one is present, while providing ideal lighting whenever it's needed. Setting of the RF version requires a remote control. For more information please see separate RF manual on www.defa.com.

LightAdjust

Fittings marked with "LightAdjust" are equipped with a setting which makes it possible to set the preferred light level in 8 steps, from 440 up to 1340 lumen. By delivery the fittings are set on 1000 lumen.



LedgeCircle with PIR sensor



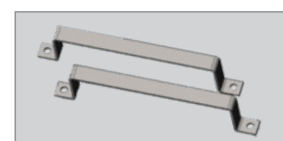
LedgeCircle is supplied with back/side light

Number	Type	Light source			Control		Weight
120773	LedgeCircle	D300	10W	3000K		LightAdjust	1,4 kg
120774	LedgeCircle	D300	10W	3000K	DALI		1,4 kg
120775	LedgeCircle PIR	D300	10W	3000K	PIR OnOff	LightAdjust	1,5 kg
120777	LedgeCircle PIR	D300	10W	3000K	PIR MinMaxOff		1,5 kg
121870	LedgeCircle Radar	D300	10W	3000K	Radar MinMaxOff		1,5 kg
122368	LedgeCircle RF	D300	10W	3000K	RF Radar MinMaxOff*		1,5 kg
120778	LedgeCircle	D300	10W	4000K		LightAdjust	1,4 kg
120779	LedgeCircle	D300	10W	4000K	DALI		1,4 kg
120780	LedgeCircle PIR	D300	10W	4000K	PIR OnOff	LightAdjust	1,5 kg
120782	LedgeCircle PIR	D300	10W	4000K	PIR MinMaxOff		1,5 kg
120853	LedgeCircle Radar	D300	10W	4000K	Radar MinMaxOff		1,5 kg
122367	LedgeCircle RF	D300	10W	4000K	RF Radar MinMaxOff*		1,5 kg

* For setting of the RF version the 122608 remote control is required

Accessories:

120420	Remote control HRC-05	For PIR MinMaxOff
122608	Remote control RF HRC-11	For RF Radar MinMaxOff
123416	Shelter brackets	D300 kit (pair)



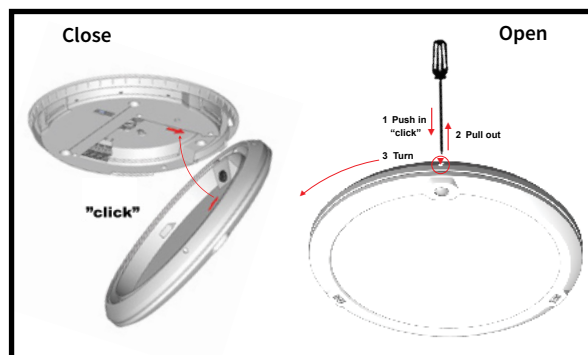
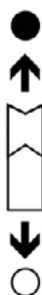
Shelter brackets

LED unit

Effect fitting	10W	10W
Colour temperature	3000K	4000K
Luminous flux fitting - lm	1024	1122
Luminous efficiency fitting - lm/W	102	112

Colour index	RA>80
Colour tolerance	MacAdam 3
Lifetime OnOff: L80B10	100.000 h
Lifetime DALI: L80B50	100.000 h
Lifetime driver:	62.000 h
Lifetime driver:	100.000 h

W	lumen out	1	2	3
4,4	440	○	○	○
5,6	560	○	○	●
7,2	720	○	●	○
8,5	850	○	●	●
10,3	1030	●	○	○
11,2	1120	●	○	●
12,7	1270	●	●	○
13,4	1340	●	●	●



LightAdjust - adjustable light

Fittings marked with "LightAdjust" are equipped with a setting which makes it possible to set the preferred light level in 8 steps, from 440 up to 1340 lumen. By delivery the fittings are set on 1000 lumen.

Easy mounting and dismounting

The mounting plate and the fitting clicks together and the fitting is installed. Dismounting by an easy click and turn mechanism to open the fitting.

