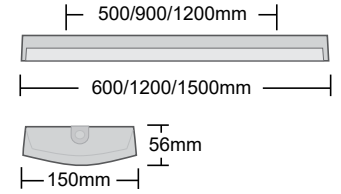
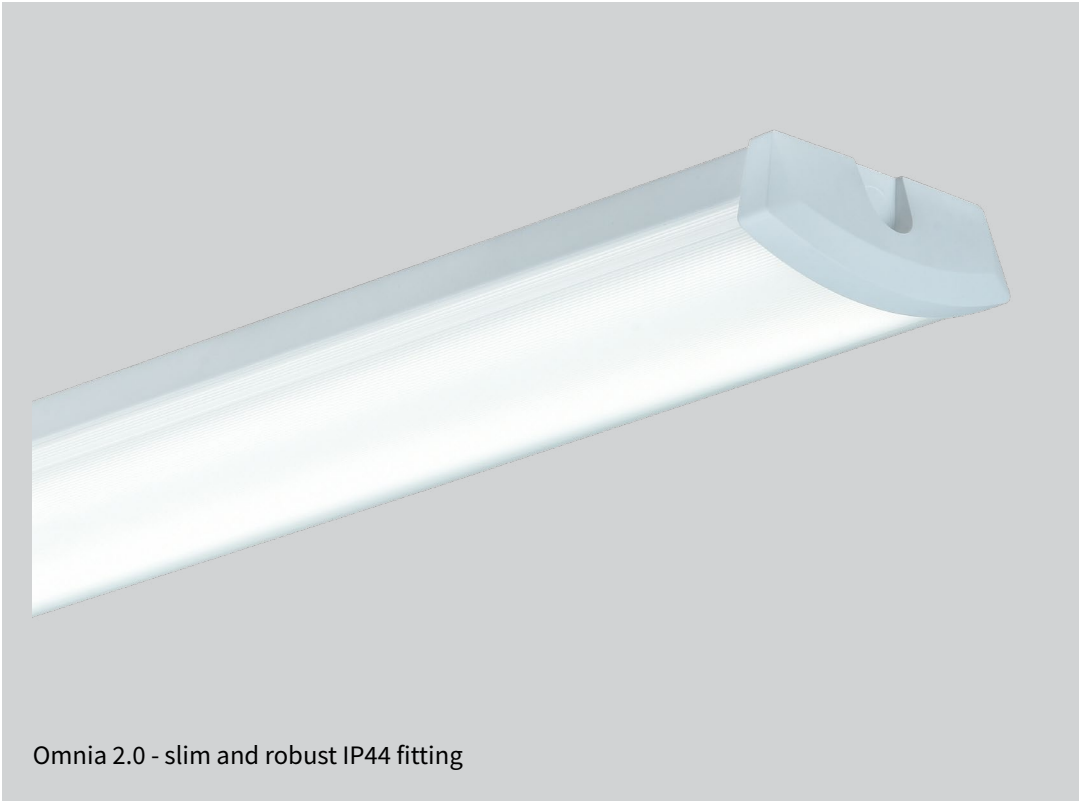


Omnia 2.0



Omnia 2.0 - slim and robust IP44 fitting

Description

Housing in steel plate, powder painted in white (RAL 9016), endcaps in white ABS plastics which are fixed to the housing. Diffuser in opal acrylics (PMMA).

Application areas

Industry facilities, wet room areas, cloakroom, garages, parking etc...

Mounting

Direct in ceiling or on wall. IP44 when horizontal mounting in ceiling. IP40 when suspended and when horizontal or vertical mounting on wall. Wall brackets are available as accessories. The fitting is weight balanced.

Installation

Power connection in center from top of the fitting. Knock-outs available in the end caps. The fitting is supplied with 5x2,5mm² push-in terminal block in center with through wiring possibilities.

Others

1500mm module and DALI versions available on request. Wall brackets and safety bracket are available as accessories.

Sensor

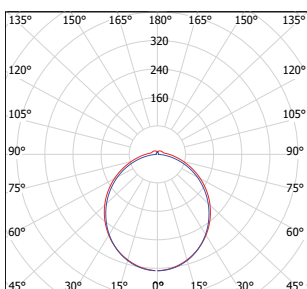
Omnia 2.0 Radar is available with microwave sensor (5,8 GHz). The sensor detects movements in its surroundings, even through windows and thin walls. The sensitivity is adjusted by a DIP-switch (1m - 6m) on the sensor. Likewise, the hold time can also be adjusted (5s-30min). More Radar fitting can be connected (Master/Master), max total effect 400W. A Radar fitting can also be used to control standard fittings (Master/Slave), max total effect 400W.

Fittings each circuit

Fittings each circuit		B	C
16W	10A	40 pcs	40 pcs
16W	16A	60 pcs	60 pcs
36W	10A	14 pcs	23 pcs
36W	16A	23 pcs	39 pcs

Light source

Colour index	Ra >80
Colour tolerance	MacAdam 3
Lifetime LED	L80B50 100 000 h
Lifetime driver	100 000 h (10%)

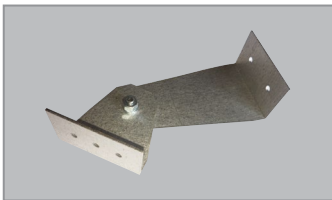


DEFA nr.	Type	Module	Light source		lm fitting	lm/W	Control	Weight (kg)
123164	Omnia 2.0	600	16W	3000K	2100lm	131		1,6
123166	Omnia 2.0 Radar	600	16W	3000K	2100lm	131	Sensor OnOff	1,6
123165	Omnia 2.0	600	16W	4000K	2200lm	138		1,6
123167	Omnia 2.0 Radar	600	16W	4000K	2200lm	138	Sensor OnOff	1,6
123168	Omnia 2.0	1200	36W	3000K	4800lm	133		3,1
123170	Omnia 2.0 Radar	1200	36W	3000K	4800lm	133	Sensor OnOff	3,1
123169	Omnia 2.0	1200	36W	4000K	5000lm	139		3,1
123171	Omnia 2.0 Radar	1200	36W	4000K	5000lm	139	Sensor OnOff	3,1
123393	Omnia 2.0 Radar	1200	36W	4000K	5000lm	139	Sensor MinMaxOff	3,1
123688	Omnia 2.0 PIR	1200	36W	4000K	5000lm	139	Sensor OnOff	3,1
123421	Omnia 2.0	1200	46W	3000K	6000lm	130	DALI	3,1
123422	Omnia 2.0	1200	46W	4000K	6100lm	133	DALI	3,1

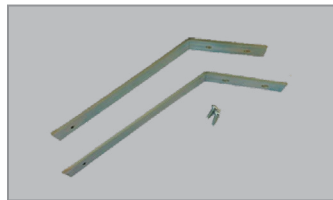
Tw = Through wiring

Accessories:

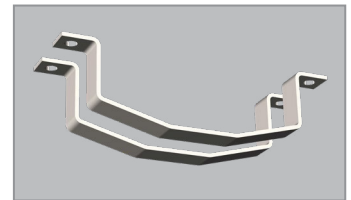
114079	Wallbracket 45°	pair		
109549	Wallbracket adjustable	pair		
124349	Safety bracket	pair		
123395	Diffuser	600	opal	
123396	Diffuser	1200	opal	



Adjustable wall bracket - corr. cl. 3



Wall bracket 45° - galvanized



Safety bracket