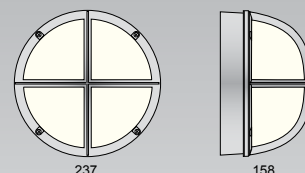
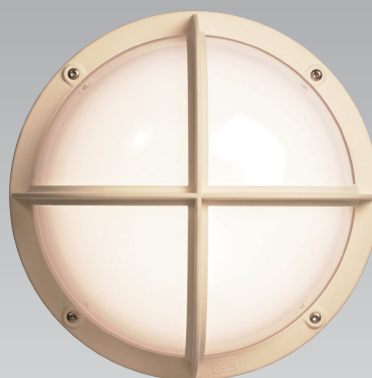


Neptune 001 cross LED



Neptune - a robust and vandal resistant IP65 fitting with LED and sensor

Description

Neptune 001 is a quality fitting in a circular shape (001) made of high pressure die-cast aluminium. Diffuser in UV- and vandal resistant polycarbonate. The front ring is fixed with 4 torx screws in stainless steel which are given a Delta seal treatment. IP65 class I. A number plate is available as accessories. The plate is fixed together with the fitting from behind.

Application areas

P-house, facades, entrances, stairs, pedestrian areas, underpasses and tunnels.

Mounting

Direct in ceiling or on wall. The fittings can also be mounted on the Arc pole.

Installation

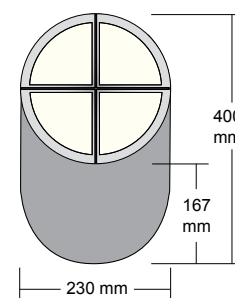
The fitting is prepared both for open and hidden installation. Push in terminal block 3x2x2,5 mm² with through-wiring possibilities.

LED module

Colour temperature 3000K - 4000K
Effect fitting 12W
Luminous flux fitting 505 lm
Lifetime L70B50 50.000 t

Additional

The sensibility is adjusted on the microwave sensor. Likewise the hold time (exposure time after detected movement) might be adjusted (5 sek - 25 min). The sensor has also a setting for a twilight function (2 - 30 lux). Radar can also be used as Master for other fittings.



House number plate

OUTDOOR

White	Alu	Type	Decor	Light source
108694	108696	Neptune 001 LED	Cross	LED 12W 840
111861	111863	Neptune 001 LED Radar	Cross	LED 12W 840
111597	111599	Neptune 001 LED	Cross	LED 12W 830
111870	111872	Neptune 001 LED Radar	Cross	LED 12W 830
Accessories:				
105289	111437	Number plate		

NB!

A microwave sensor detect all forms of movement, not only from people and animals.

This means that the sensor might detect movements for instance from branches or leaves.

Please allow for this when installing the fitting to avoid unwanted functions.

Reservation for misprinting or product changes.