

Casambi App Short User Guide

Version 1.2.4
27.7.2016
© Casambi Technologies Oy

CASAMBI

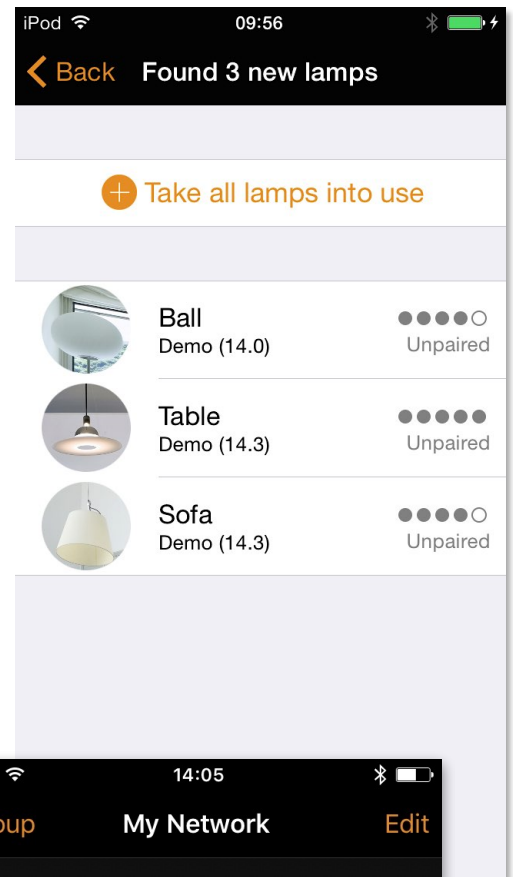
www.casambi.com · support@casambi.com

First time use

Casambi app is easy to use. Follow these simple steps.

1. Download the app from Apple App Store or Google Play Store.
2. Turn on your Casambi enabled luminaires.
3. Open the app.
4. Casambi app will automatically find all Casambi enabled luminaires that are switched on.
5. Tap on the 'Take all lamps into use'
6. Casambi app will automatically add all luminaires to one network and open the 'Lamps' tab

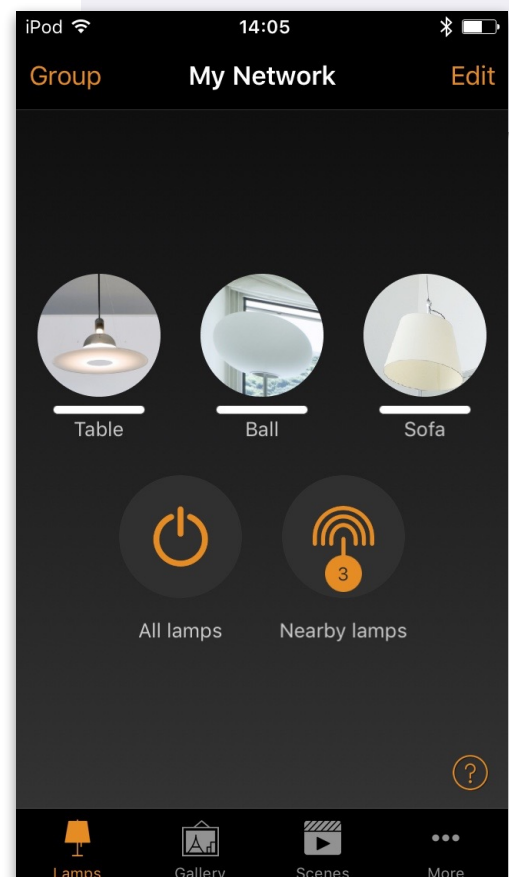
Tip: If you want to allow other users to use your lamps, please see the Networks and Sharing section later in this document



Basic gestures

Here are the basic gestures how to control your lights.

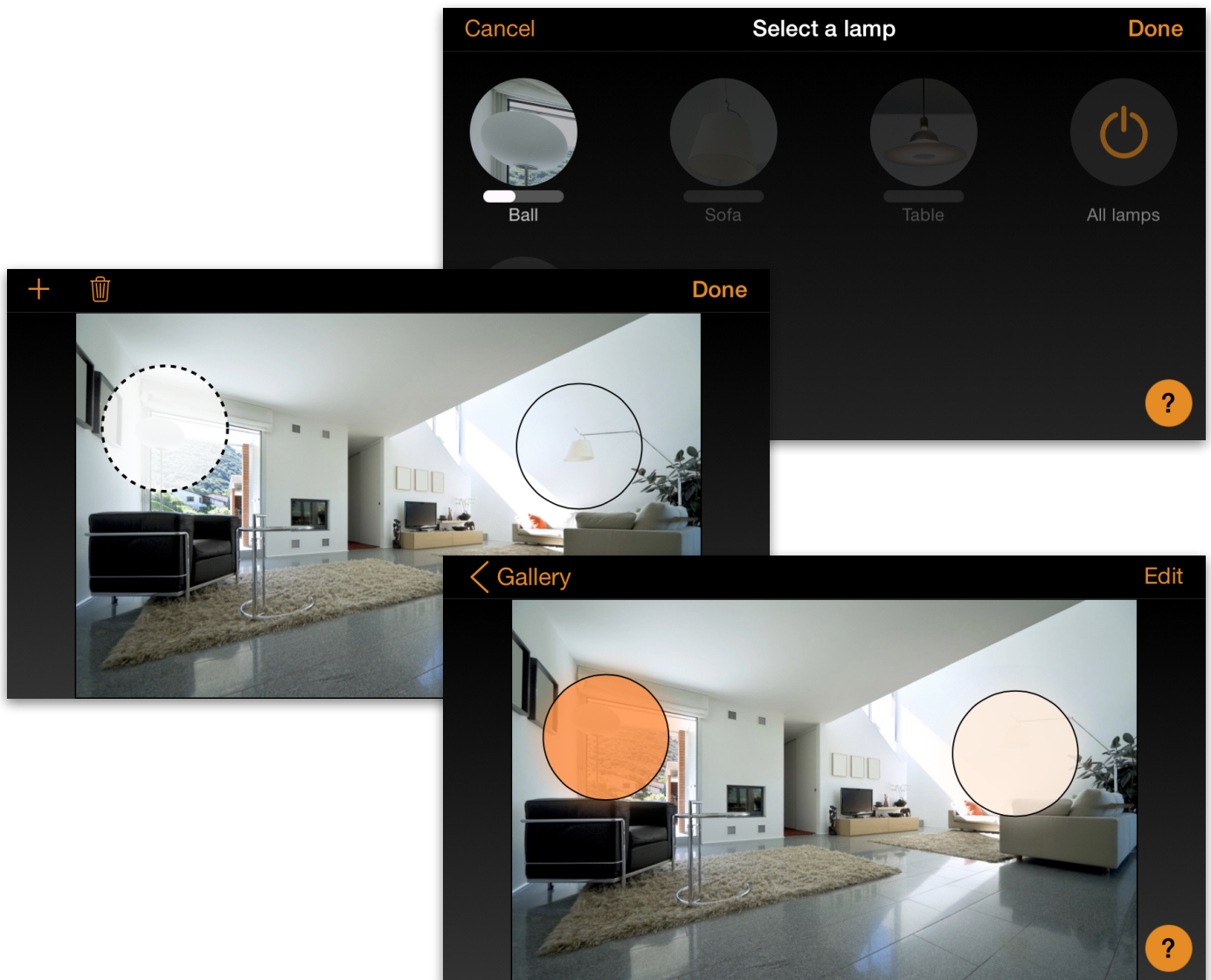
- To turn off or on your luminaire just tap on the lamp control.
- Pan lamp control left or right to adjust light level of the luminaire.
- Pan lamp control up or down to adjust the colour temperature of the luminaire.
- Hold on top of the lamp control to change the colour and save colours to palette.



Gallery

The Gallery in Casambi app is the most natural way of controlling your luminaires. Take a picture of the room where your luminaires are, and place lamp controls over them in the picture. You can also take a panorama picture to have more luminaires in one photo.

1. Add a photo of your room to Casambi Gallery by tapping 'Edit' and after that the '+' sign.
2. After you have added a photo you can add lamp controls to the picture. Tap on the '+' sign, select a lamp control that you want to add to the picture and tap 'Done'.
3. After you have added controls over all the luminaires in the picture tap 'Done'.
4. Now you can control your luminaires visually from the picture. No need to guess which luminaire is which.



Scenes and animations

In the 'Scenes' tab you can create different lightings for different occasions. It is possible to control multiple luminaires with one tap to create perfect ambience. One luminaire can be used in several scenes.

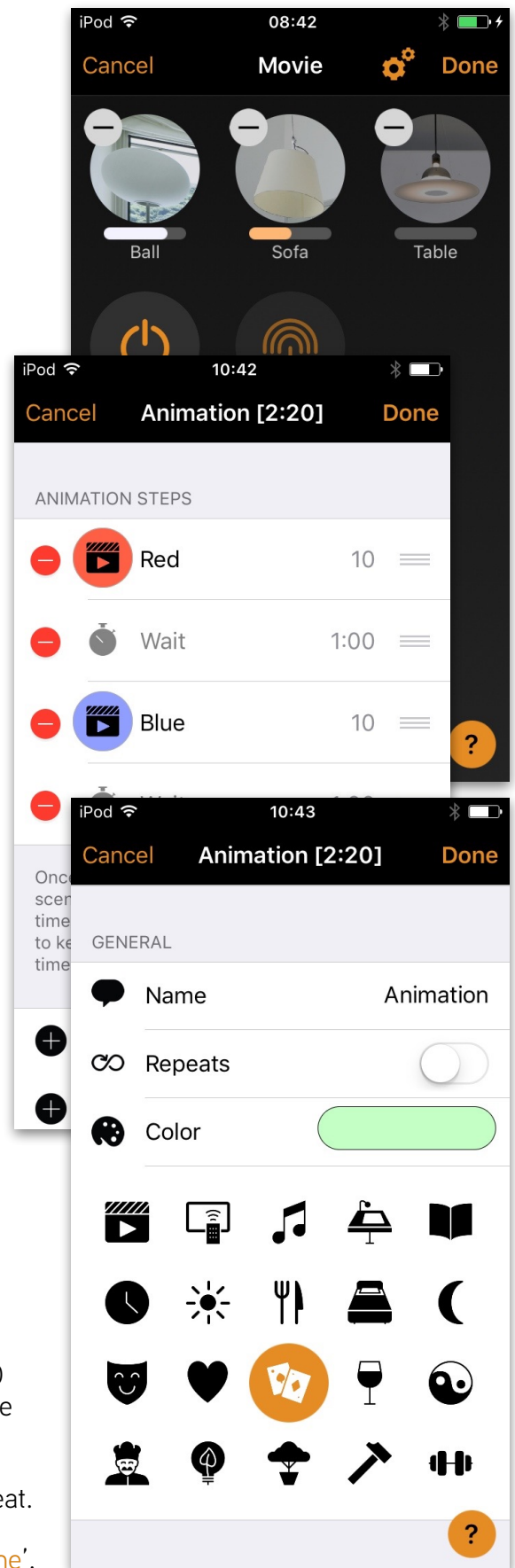
1. Tap on 'Add a scene' and enter a name for the scene. Select the 'Add a scene' option
2. Select one or multiple lamp controls and adjust the luminaires for the scene. You can adjust the luminaires separately or if you want to have same dim level or colour for all you can use the 'Lamps in scene' control to adjust all luminaires in the scene.
3. When you are done editing the scene tap on 'Done'.
4. If you would like to create more scenes tap on the 'Edit' on top right corner and then tap on the '+' sign.

In the 'Scenes' tab it is also possible to create animations. Animations or dynamic scenes are special scene type that fade from scene to scene. They can be used like ordinary scenes. Animations can also repeat.

1. Tap on the 'Edit' on top right corner and then tap on the '+' sign.
2. Tap on the 'Add an animation' option
3. Add animation steps. You can add scenes and wait times to animation. Example:
 - Add Scene Red, fade time 10 sec
 - Add wait 1 min
 - Add Scene Blue, fade time 10 sec

This animation setting will fade in to scene Red in 10 seconds and Red will be active for 1 minute. Then the scene Red will fade into scene Blue in 10 seconds.

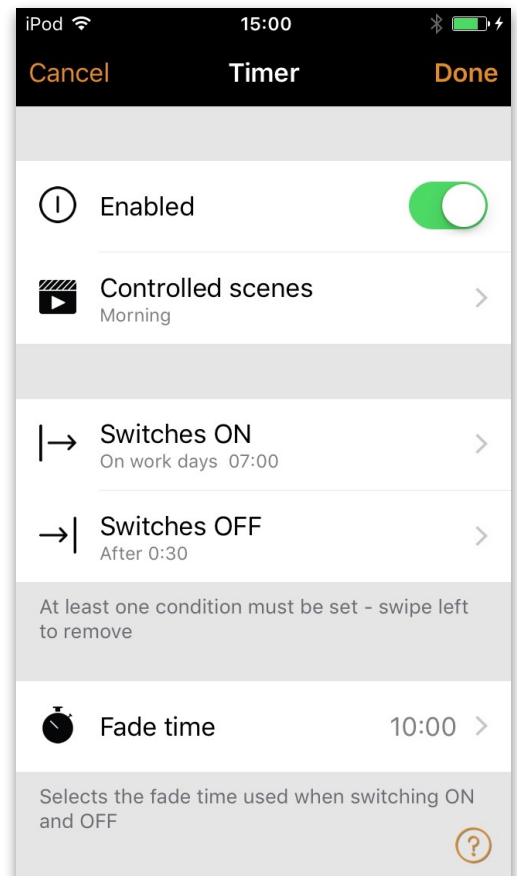
4. In General settings you can set the animation to repeat.
5. When you are done editing the animation tap on 'Done'.



Timer

With schedule/timer function you can create a list of timers that will turn scenes or animations on and off based on time.

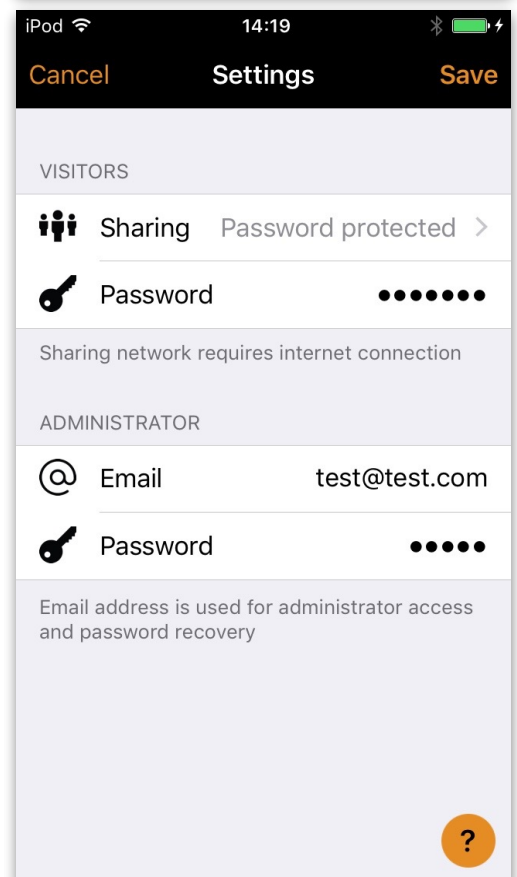
1. Go to More tab and select Timer. Create a new timer by tapping the 'Add a timer'
2. Tap on the 'Controlled scenes' and select a scene or animation that this timer will control
3. Tap on the 'Switches ON' button to set the time when the scene should turn on and tap on the 'Switches OFF' button to set the time when the scene should turn off.
4. It is also possible to set a fade time for the timer so that the scene will come on smoothly.
5. When you are done editing the timer tap on 'Done'.



Networks and Sharing

If you want to control your luminaires from more than one mobile device you need to change the network sharing settings. As a default the created network is not shared and only stored in the device that created it.

1. Go to 'More' tab and select 'Network setup' and 'Sharing settings'.
2. Tap on the Sharing and the 'Sharing mode' screen will open.
3. There are four different sharing modes: Not Shared, Administrator only, Password protected and Open. When you select Administrator only, Password protected or Open mode the network will be uploaded to cloud server and then it can be accessed also from other mobile devices.
4. Add also an email address and a password for the network.
5. Confirm your settings with 'Save'.



Xpress

Casambi Xpress is a wireless user interface that brings flexibility to interior design. The switch can be kept wherever the user needs it and it gives direct access to all the important Casambi lighting control functionalities.

1. Press any button on the Xpress and Casambi app will automatically detect it. Tap on the 'Add to My Network' or 'Take into use'
2. After you have added the Xpress to the network go to 'More' tab and tap on the Switches to configure the buttons.
3. Tap on the switch and the configuration page opens. You can assign a scene, a group, a lamp or all lamps to each of the buttons. You can also rename your Xpress.

After configuring the buttons they will now control the assigned scene, lamp or group. First press will turn the scene, lamp or group on and second press will turn it off. From the + and - buttons you can dim up or down the controlled scene, lamp or group.

Unpairing

You may need to remove a lamp from a network if you want to add it to another network. Casambi enabled lamps can only be added to one network at a time.

To unpair a lamp go to the 'Nearby devices' screen found under 'More' tab in the Casambi app. Tap on the lamp you want to unpair and select 'Unpair lamp'. This will unpair the lamp if you have modification rights to the network.

If you don't have the modification rights to the network that the lamp is paired to then you need to have access to the lamp's power switch to unpair the lamp. Tap on the 'Unpair lamp' and the app will open an 'Unpair' screen. Tap on the 'Start' button and the time bar appears. Now quickly flick the power switch off and back on to unpair the lamp. If unpairing succeeded there is a message that lamp has been unpaired.

